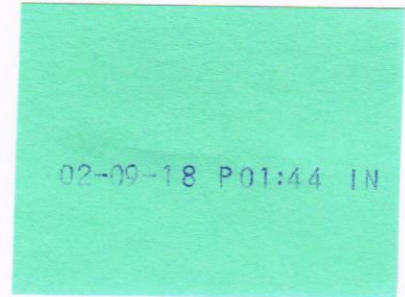




February 5, 2018

Office of Hopkins County Judge  
The Honorable Robert Newsom  
Post Office box 288  
Sulphur Springs, Texas 75483



*Farmers Electric Cooperative Member: Lee A Martin*  
*Service Order Number: 1801002204*

**Dear Judge Newsom,**

Farmers Electric Cooperative, Inc. is requesting permission to re-route existing electrical power distribution facilities *across CR 1127*, which is located approximately *608 ft S of CR 1127, in Hopkins County, Texas.*

Site location map and construction sketches are enclosed. The construction sketch details the proposed work. All road crossing will have a minimum vertical clearance of 22 feet.

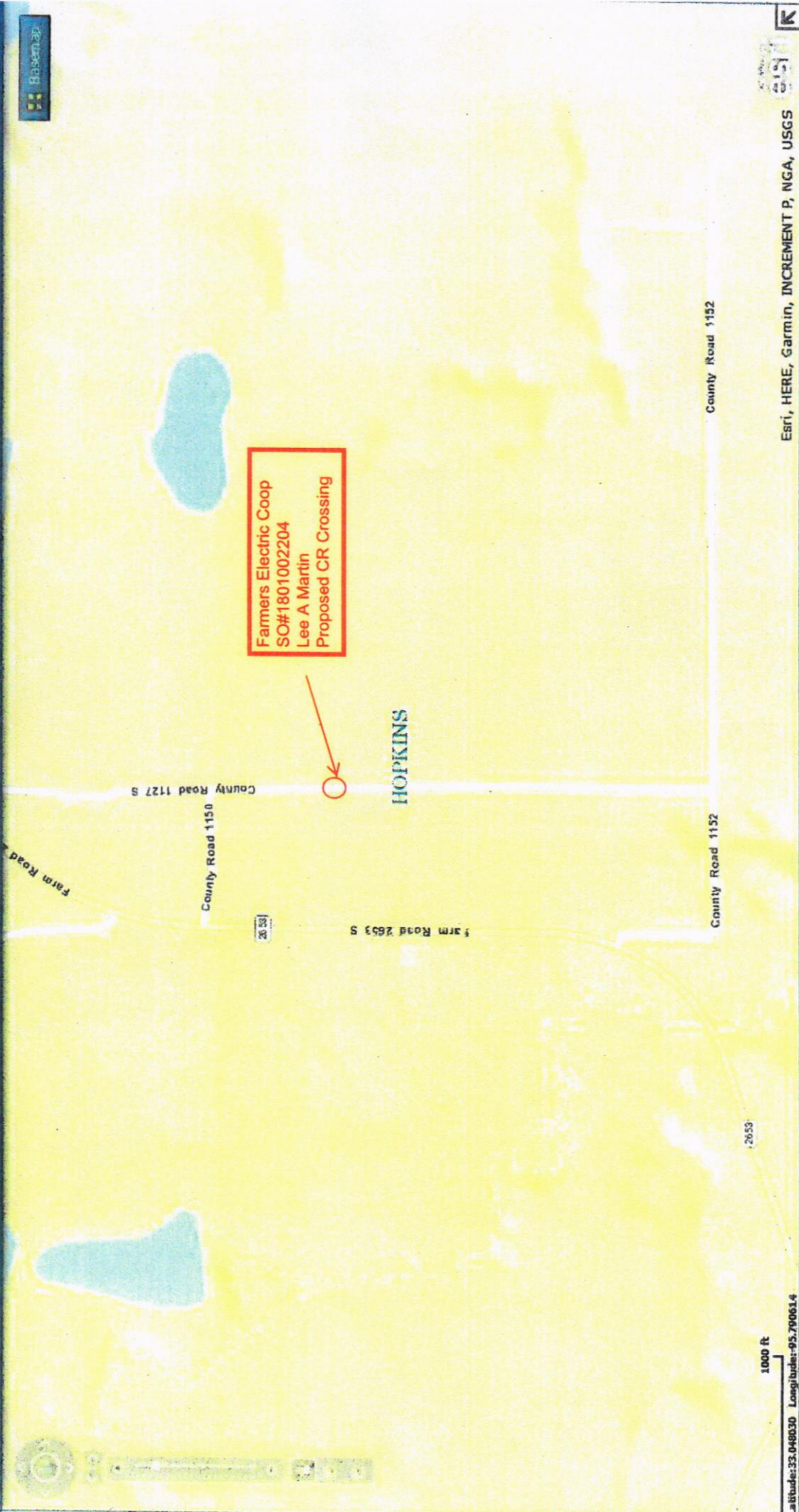
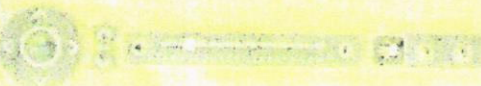
**If you have any questions, please feel free to contact met at any time at 903-441-1368.**

Sincerely,  
*Tamara Williams*  
Engineering Assistant  
twilliams@farmerselectric.coop

A handwritten signature in black ink that reads "M. J. Barker".

Enclosures

**Submitted by:**  
Damaris Rivera  
Field Engineering Coordinator  
Office 903-453-0724



Farmers Electric Coop  
SO#1801002204  
Lee A Martin  
Proposed CR Crossing

HOPKINS

County Road 1127 S

County Road 1150

County Road 1152

County Road 1152

Farm Road 2653 S

2653

1000 ft

Latitude: 33.048030 Longitude: -95.790614

K

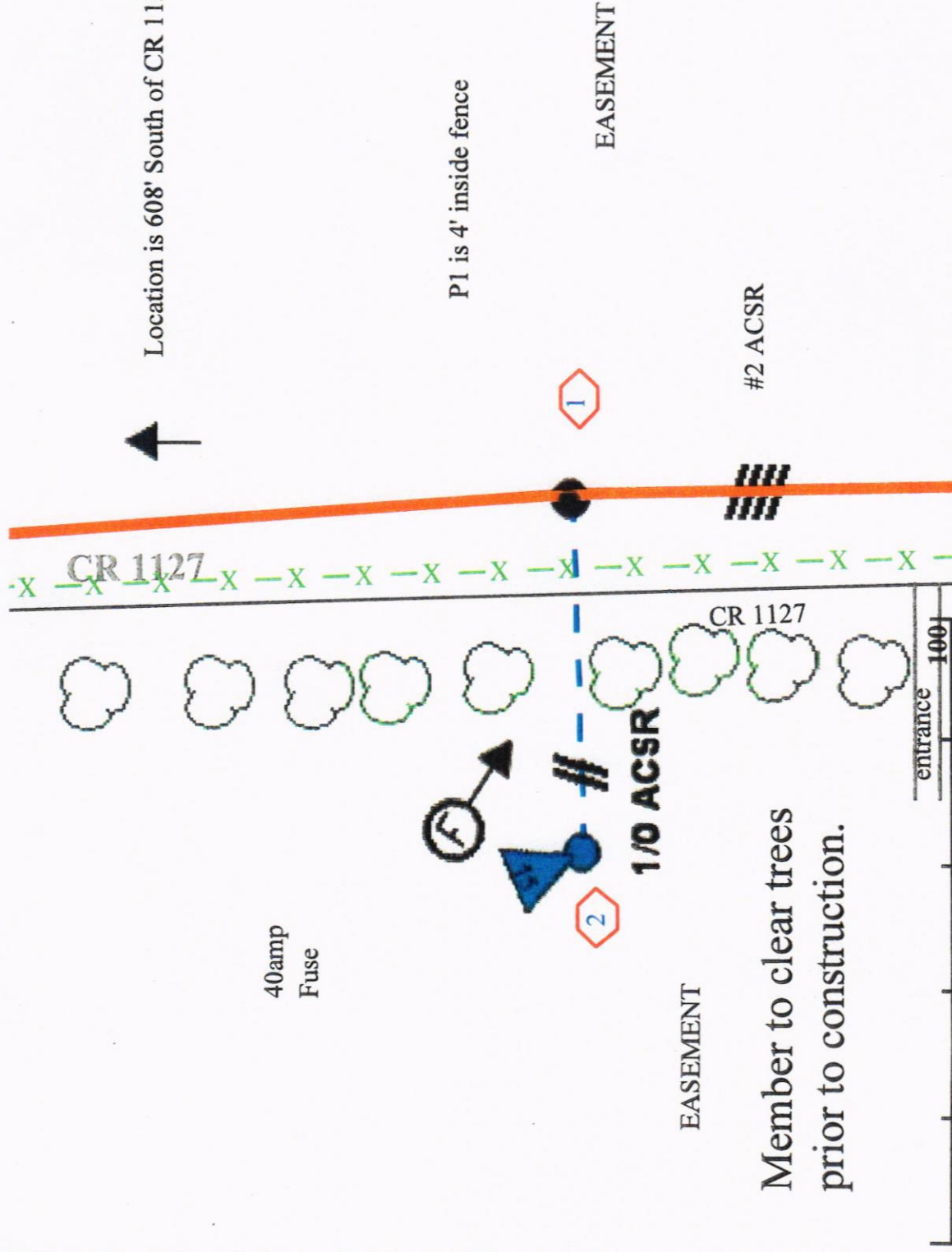
Esri, HERE, Garmin, INCREMENT P, NGA, USGS



14.4KV



Location is 608' South of CR 1150



40amp Fuse



1/0 ACSR



EASEMENT

Member to clear trees prior to construction.

entrance 100

Misc. Remarks: Install primary tap off of replaced pole 054851. Build 57' crossing to new pole. Install 15kva xfmr. Requires (2) Easements, underground release, and Hopkins County road crossing approval. Cost Due (added to .12) Rate 1 Rev 1. Work with .25 to changeout old pole and .12 to install new underground service. TLW